

# Readiness and Environmental Protection Integration (REPI) Program in Virginia

Hosted by VaULT  
June 23, 2023



# Readiness and Environmental Protection Integration (REPI) Program in Virginia

## PRESENTERS:

Lindsay Vargenko, Environmental Scientist, Naval Air Station Patuxent River

Joanna Ogburn, Principal, JBO Conservation

Heather Richards, Mid-Atlantic Regional Director, The Conservation Fund

Lynda Frost, Senior Project Manager, Trust for Public Land

# Readiness and Environmental Protection Integration (REPI) Program in Virginia

- REPI Program Overview – Lindsay
- Sentinel Landscapes – Joanna
- Example REPI Partnerships in Virginia
  - Army - Fort AP Hill – Heather
  - Navy - Dahlgren and Patuxent/ATR – Lynda
- Q & A



# REPI PROGRAM OVERVIEW

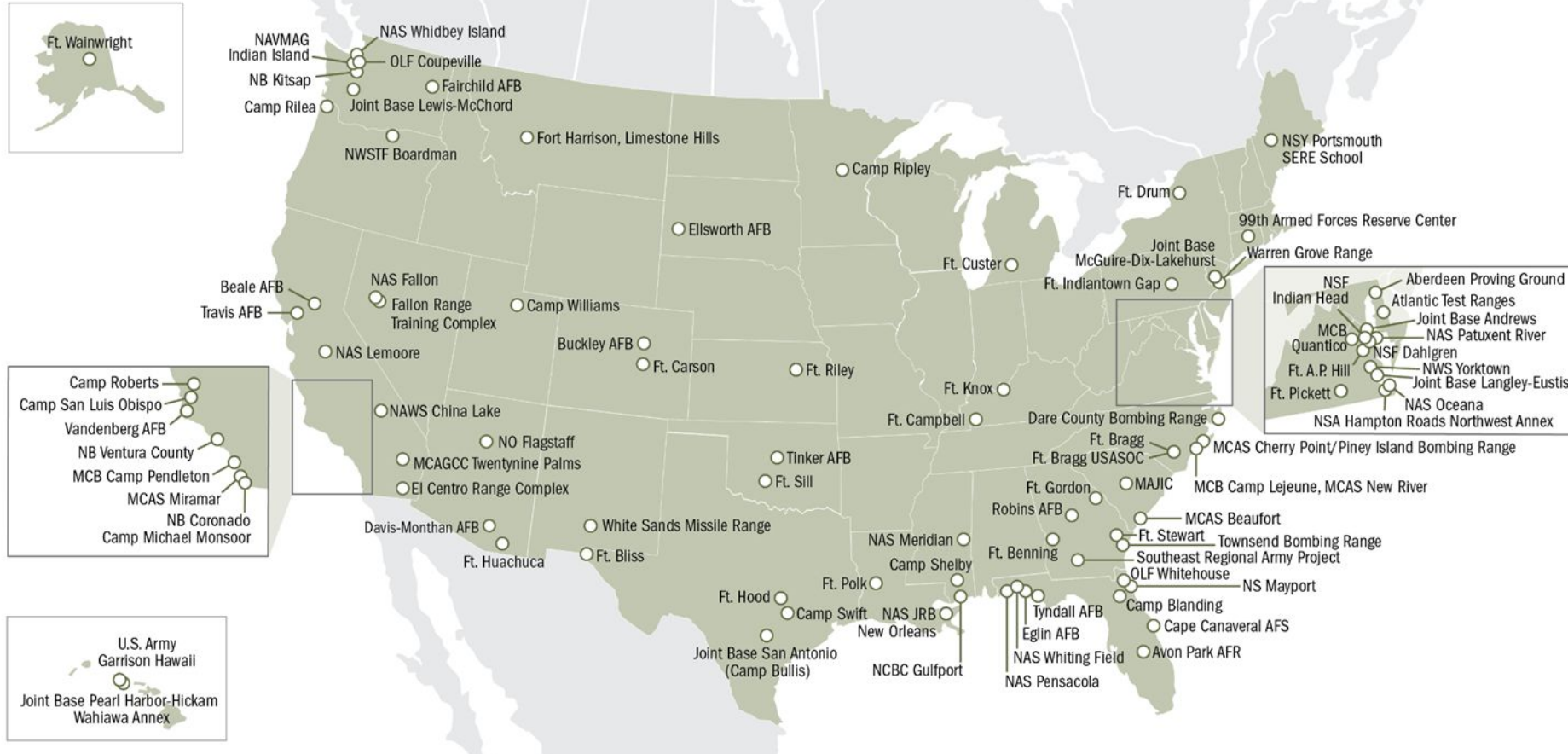
- Enables cost-sharing partnerships between military services, private conservation groups, and state and local governments to purchase land interest or easements from willing landowners to implement off-base natural resources management, or improve military installation resilience
- A key tool for combating encroachment that can limit or restrict military training, testing, and operations
- Helps remove or avoid land-use conflicts near installations and ranges and address regulatory restrictions that inhibit military activities

# REPI PROGRAM OVERVIEW



## REPI

Readiness and Environmental Protection Integration Program  
ENCROACHMENT MANAGEMENT PROJECT LOCATIONS



# REPI PROGRAM OVERVIEW

**10 U.S.C. § 2684a** allows agreements to acquire a real property interest or manage natural resources to:

- Limit any development or use that is incompatible with the mission of the installation
- Preserve habitat to relieve current or anticipated restrictions on military activities
- Enhance or improve military installation resilience from extreme weather events or from changes in environmental conditions that may impact military activities

**16 U.S.C. § 670c-1 Sikes Act** allows cooperative or interagency agreements for off-installation natural resources management or in support of military installation resilience

**10 U.S.C. § 2679** allows for **Intergovernmental Support Agreements (IGSAs)** that can be used to fund state and local governments to conduct off-installation natural resource management or military installation resilience improvements

# REPI PROGRAM OVERVIEW

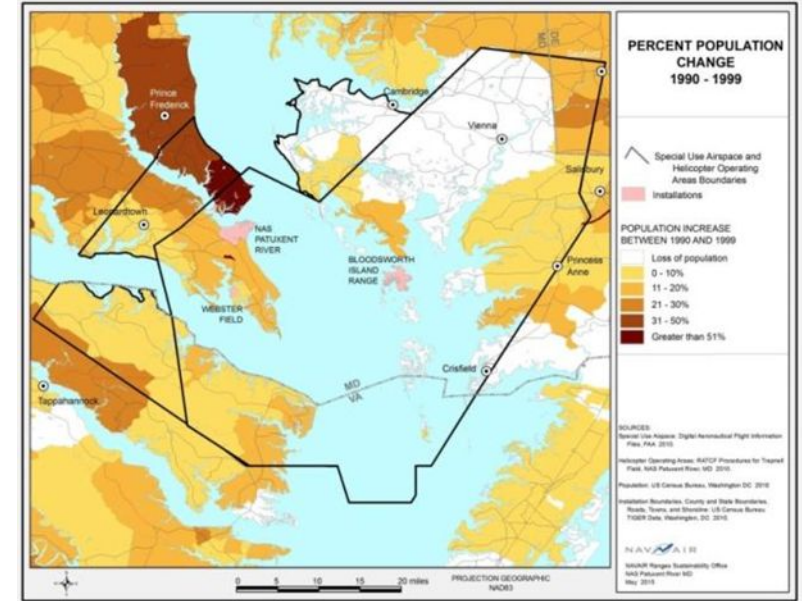
## Incompatible Development

Increasing urban development under the restricted airspace raises the potential for conflict

- Noise complaints
- Safety concerns

Possible impact to Navy operations

- Develop costly workarounds
- Reduce operating hours
- Create avoidance areas





# REPI PROGRAM OVERVIEW

## Partner Benefits

- Permanently protects land from incompatible development
- Preserves open space and creates recreational opportunities
- Creates buffers around installations and green belts to slow urban sprawl
- Preserves rural and natural lands in contiguous areas
- Provides financial incentive to landowners
- Aligns with state and local land conservation goals
- Maximizes conservation dollars and programs





# REPI PROGRAM OVERVIEW

## Elements of a REPI Partnership

- Eligible entity, including State or local government, or private conservation org
- Willing seller
- Cost share for the partner's acquisition of real property interests
- Protect compatible land uses, preserve habitat, or improve installation resilience
- Show clear link to mission benefit



# REPI PROGRAM OVERVIEW

## REPI Partnership Steps

- Partners and Military Installation meet to understand issues and priority areas
- Multi-year Encroachment Partnering Agreement developed (or other type of agreement)
- Partners identify willing landowners / potential projects / local match
- Installations request funds to DoD each fiscal year
- Partners send project info to Military Service to determine interest and funding availability
- Partners begin paperwork process, coordinating with Military Service on specific easement language, timeline, and progress
- Partners obtain property due diligence & submit package to Military Service for review/approval
- Military provides its share of funding for closing
- Navy acquires real estate interest / Other services may handle differently
- Partners monitor / inspect for compliance

# REPI PROGRAM OVERVIEW

## REPI Challenge

- Larger scale
- Innovative
- Initiated by partners

[www.repi.mil/Buffer-Projects/Repi-Challenge/](http://www.repi.mil/Buffer-Projects/Repi-Challenge/)



**Cultivate projects** that conserve land at a greater scale and test promising ways to finance land protection.



**Achieve benefits** not obtainable by typical REPI projects in order to protect critically important military missions.



**Support the REPI program** to meet its ambitious goals.



**Harness the creativity** of the private sector to access and leverage unconventional sources of funding and market-based approaches.



# SENTINEL LANDSCAPES



Joint Base  
Lewis-McChord  
Sentinel Landscape



Camp Ripley  
Sentinel Landscape



Southern Indiana  
Sentinel Landscape



Middle Chesapeake  
Sentinel Landscape



Eastern North Carolina  
Sentinel Landscape



South Carolina Lowcountry  
Sentinel Landscape



Georgia  
Sentinel Landscape



Northwest Florida  
Sentinel Landscape



Avon Park Air Force Range  
Sentinel Landscape



Camp Bullis  
Sentinel Landscape



Fort Huachuca  
Sentinel Landscape

# SENTINEL LANDSCAPES PROGRAM

- Founded in 2013 by U.S. Depts of Defense, Agriculture, and Interior
- 11 Sentinel Landscapes established
- Each has 1 or more anchor military installations

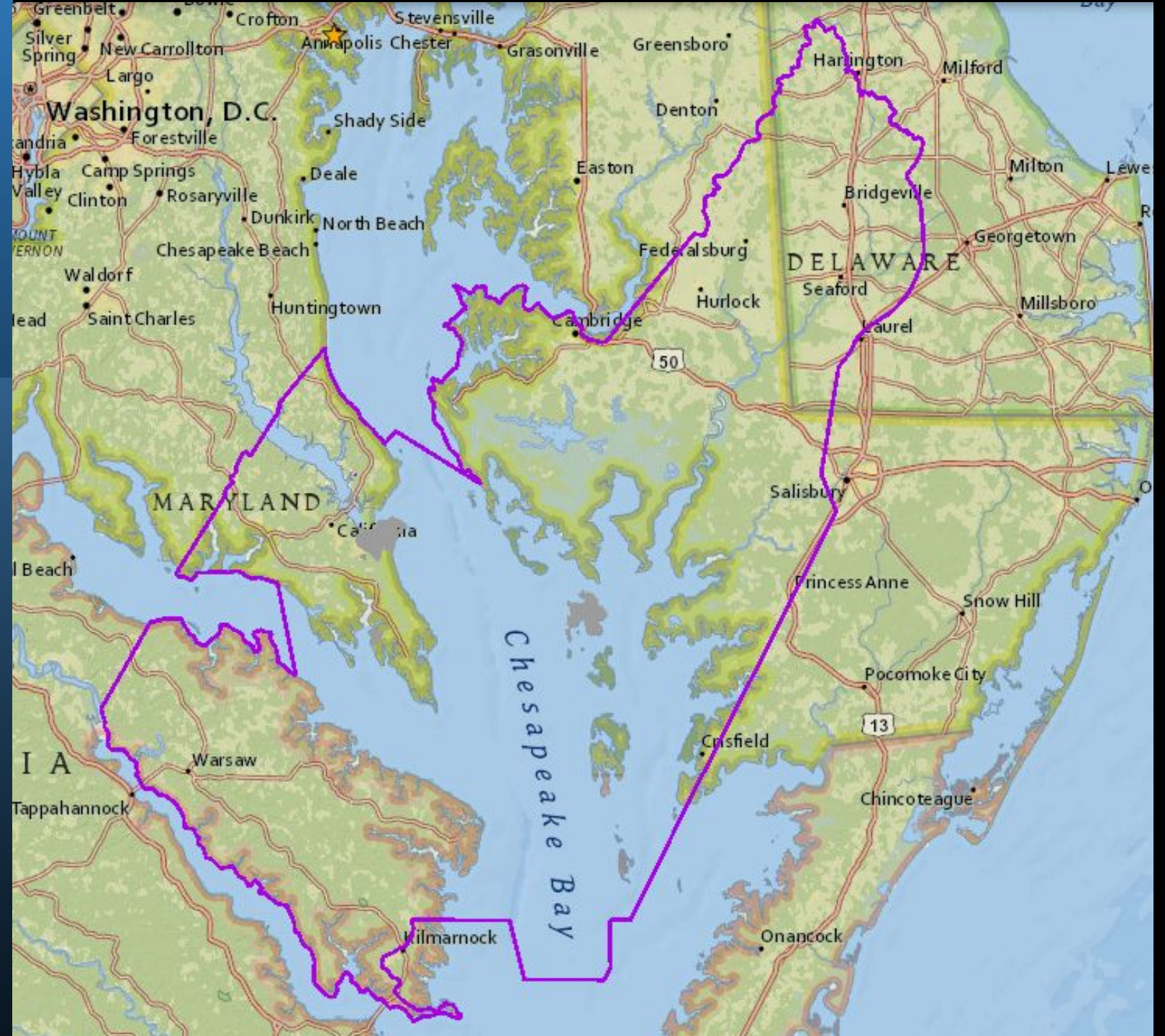
---

*Bringing partners together to strengthen military readiness, conserve natural resources, bolster agricultural and forestry economies, and increase climate change resilience*

---

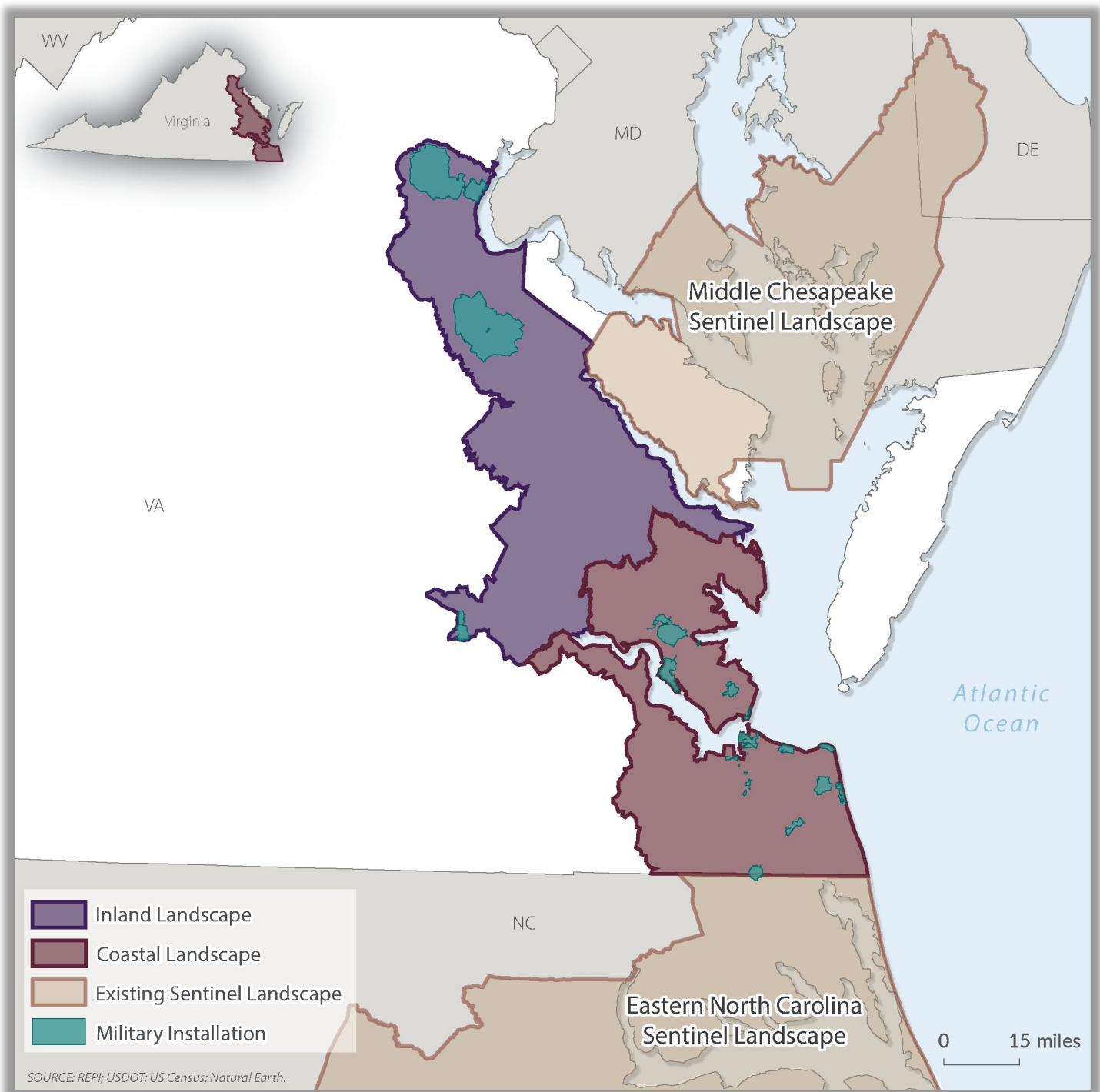


# MIDDLE CHESAPEAKE SENTINEL LANDSCAPE





# PROPOSED SENTINEL LANDSCAPES



# SENTINEL LANDSCAPES - Benefits

- Added Coordination & Capacity
  - Each SL receives Coordinator funding
- Prioritized for funding
  - Extra points in REPI, REPI Challenge, NFWF, NRCS RCPP
- Access to Technical Resources & Expertise
  - Conservation Finance Network; LegacyWorks
  - Access to DoD, DOI, USDA leadership



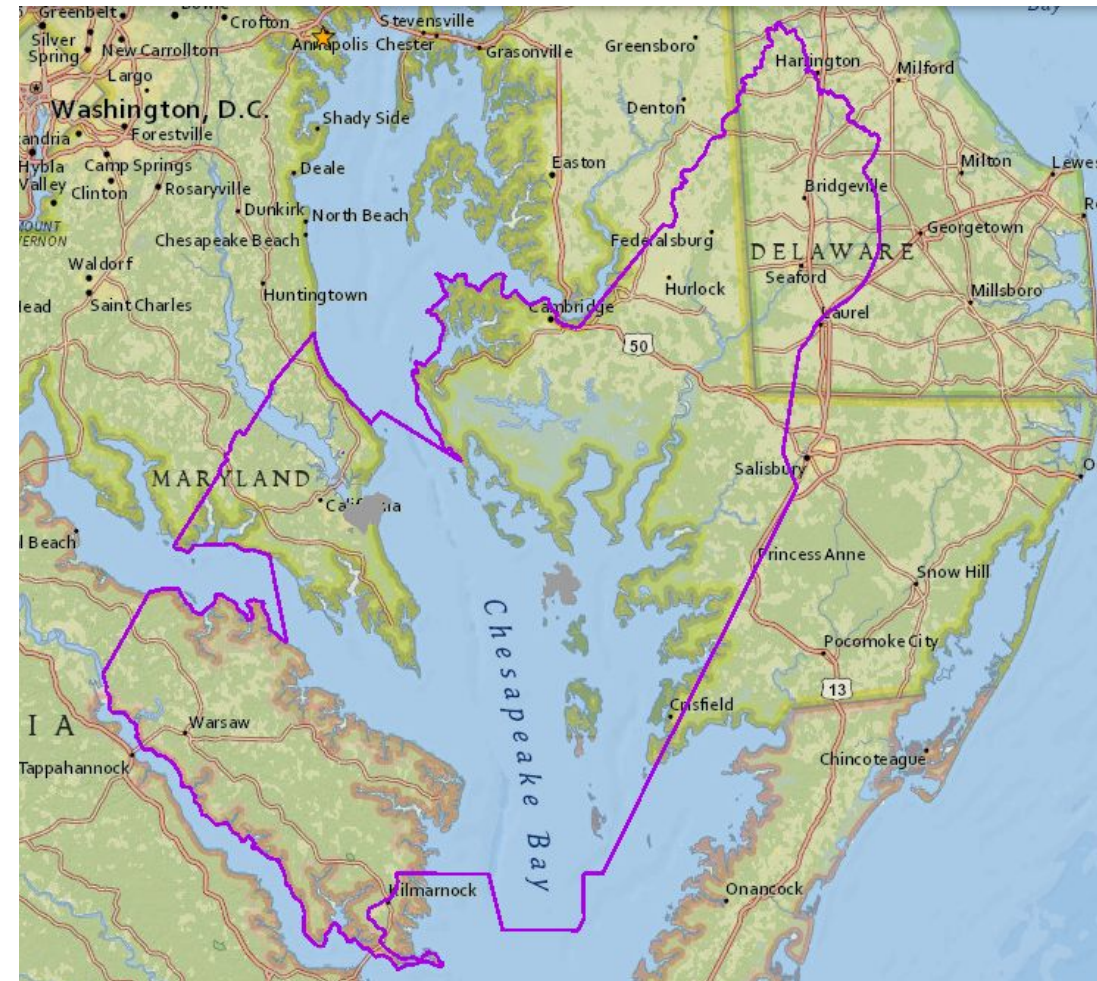


# SENTINEL LANDSCAPES

## MIDDLE CHESAPEAKE SENTINEL LANDSCAPE



- Established in 2015
- Anchor: Naval Air Station Patuxent River
- Only Multi-State Sentinel Landscape
  - MD, VA, DE





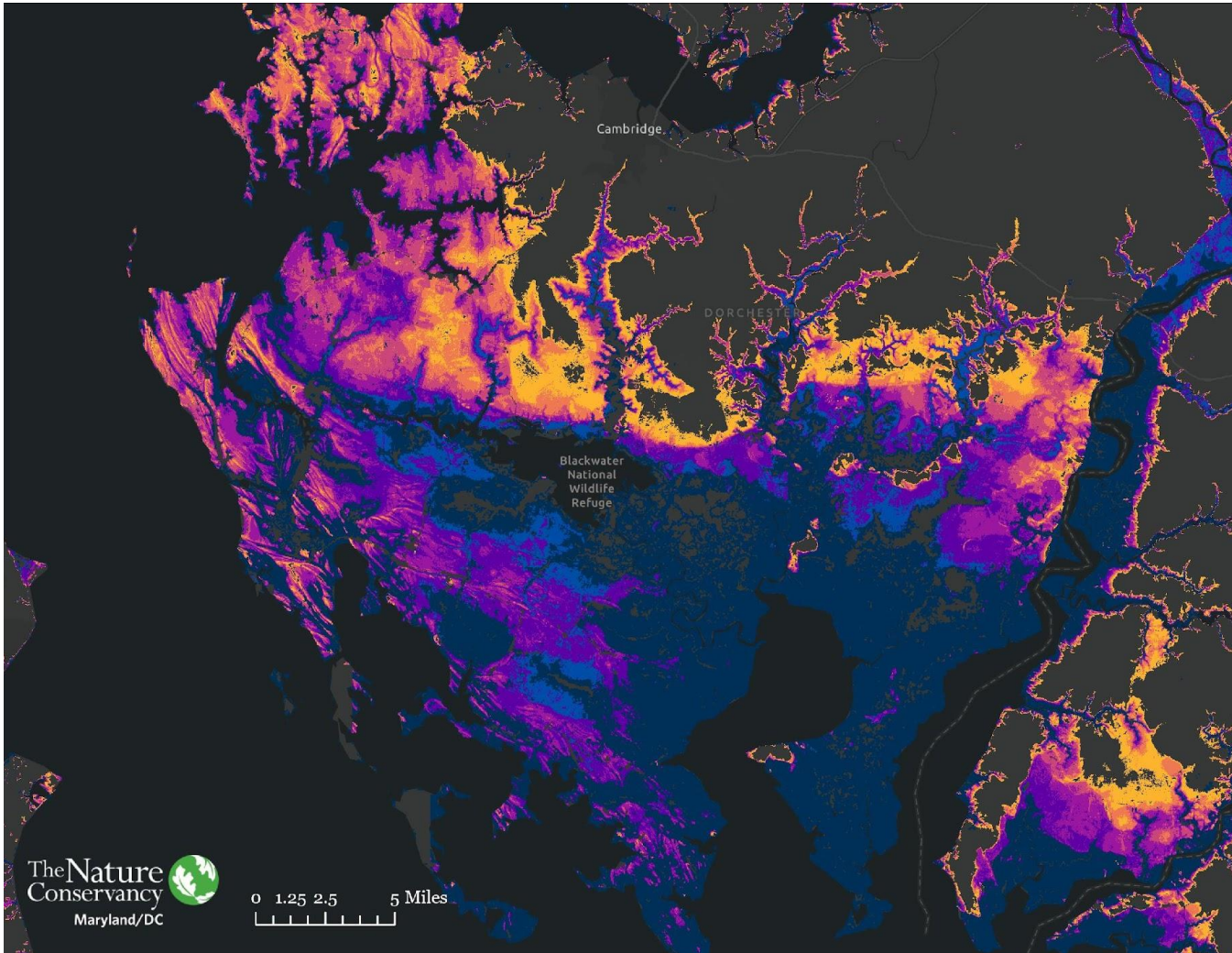
# MCSL ROLES

Convening	Convening partners to explore new and/or complex issues
Addressing Barriers	Addressing barriers to using federal/state programs
Developing Funding	Developing additional and more flexible funding mechanisms; supporting collaborative proposals
Sharing Info	Sharing info across geographies and partners
Connecting	Tying together and leveraging resources and partners

# MCSL – In Action

## Eastern Shore – Marsh Migration Corridors Collaborative Project

- Conserving 4,000 acres
- TNC awarded FY20 \$3M REPI Challenge award
- Matched by USFWS NAWCA award
- Partners:
  - U.S. Navy, U.S. Fish & Wildlife Service, The Nature Conservancy, The Conservation Fund, MD DNR, Eastern Shore Land Conservancy, Ducks Unlimited, Chesapeake Conservancy





# MCSL – In Action

## Southern Maryland – Shoreline Restoration

---

- Restoring 4,870 ft of shoreline
- Protecting Helicopter Training Areas & Diamondback Terrapin Nesting Habitat
- Led by Southern MD RC&D in partnership w/ *U.S. Navy, Coastline Design PC, Coastal Design & Construction, St. Mary's Soil Conservation District, Student Conservation Association, UM Center for Environmental Science*
- Southern MD RC&D awarded \$2.7M REPI Challenge





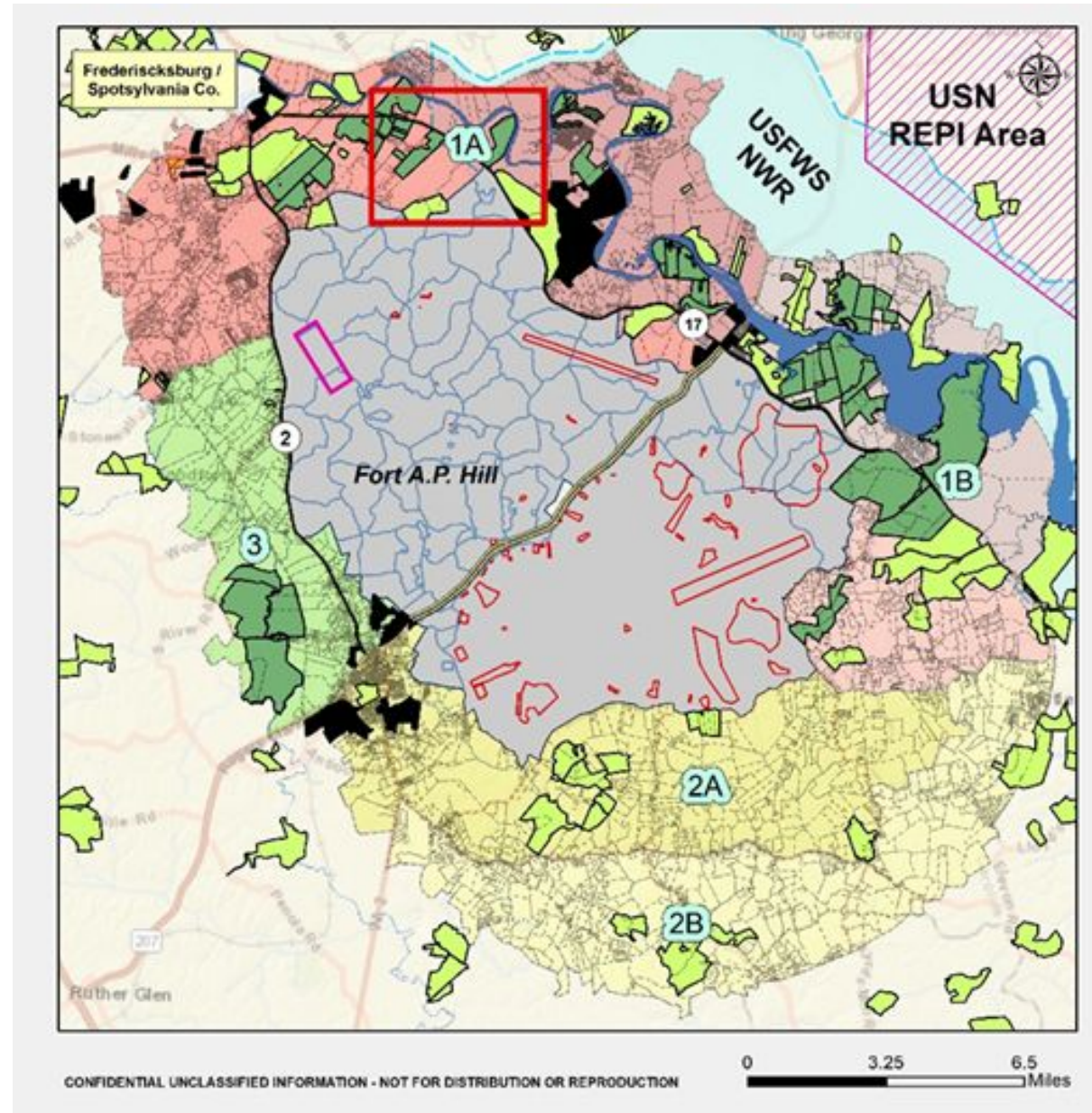
# VIRGINIA REPI PARTNERSHIP EXAMPLES

## REPI PROJECTS

Project Installation	County	Congressional District
Fort A.P. Hill (Future Fort Walker)	Caroline	7th
Fort Pickett (Future Fort Barefoot)	Brunswick, Dinwiddie, Nottoway	5th
Joint Base Langley-Eustis	York, Newport News	3rd
MCB Quantico	Prince William, Stafford, Fauquier	7th
NAS Oceana	Virginia Beach	2nd
NSA Hampton Roads, Northwest Annex	Chesapeake	2nd
NSF Dahlgren	King George	7th
NWS Yorktown	York, James City, Newport News	3rd, 1st

# Virginia Army Partnership Example – Fort A.P. Hill ACUB Program

## Fort A.P. Hill Priority Areas





# Fort A.P. Hill ACUB Program



- Fort A.P. Hill (soon to be renamed Fort Walker) is comprised of 76,000 acres in Caroline County
- Specializes in training, maneuver, and live-fire operations for Army, Army Reserves, Navy, and others
- Training mission under threat from encroachment by suburban development, noise complaints, and light pollution

# Fort A.P. Hill ACUB Program

## Partners on the Fort A.P. Hill ACUB Project:

### Cooperative Agreements:

- The Conservation Fund
- Trust for Public Land

### Other Partners:

- USFWS
- Northern Neck Land Conservancy
- The Nature Conservancy
- Chesapeake Conservancy

### Easements Held By:

- Virginia Outdoors Foundation



# Fort A.P. Hill ACUB Program

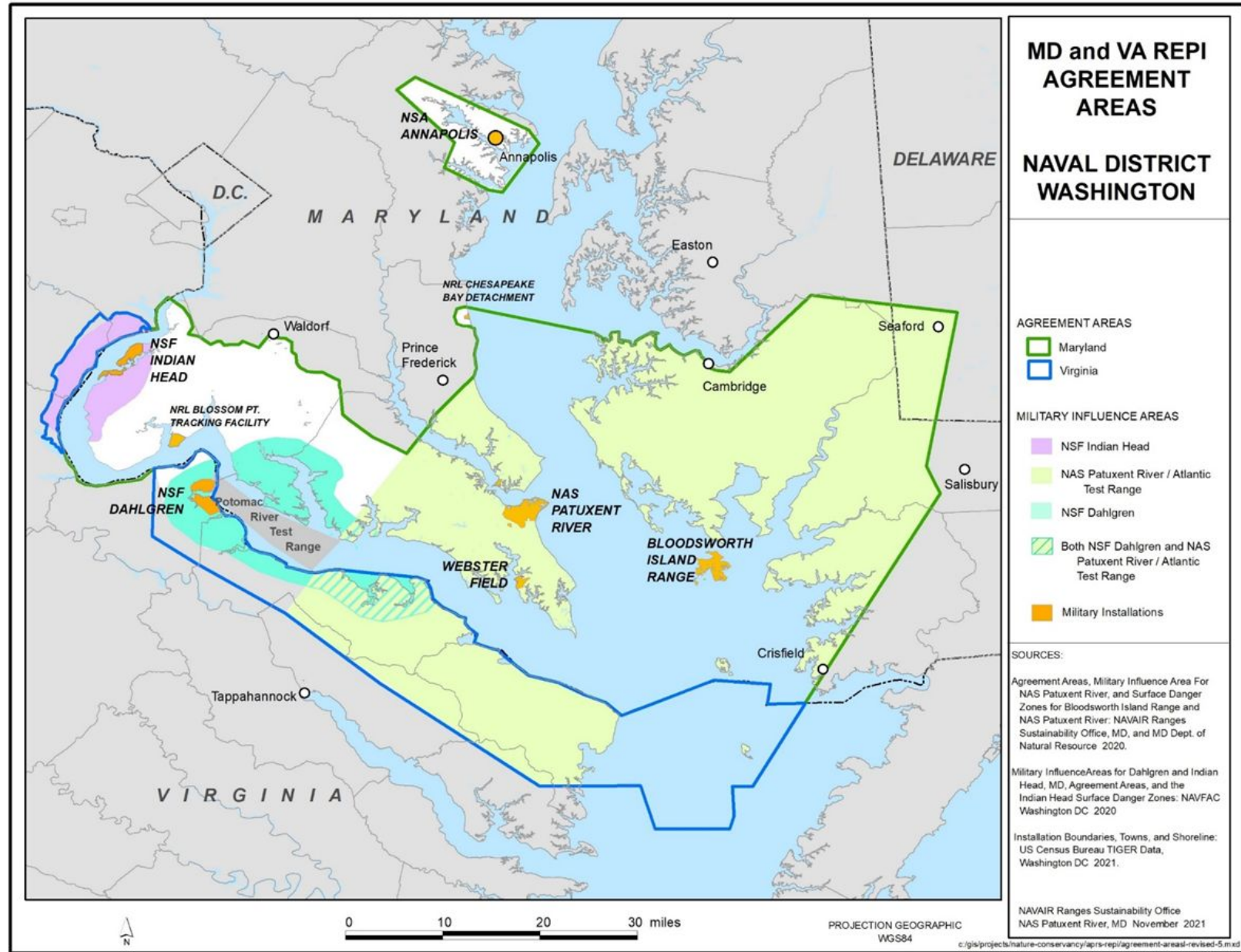
## By the Numbers:

Transactions	Acres	Expenditures
24	13,524	\$ 45,120,902

## Conservation Values:

- Farmland Conservation (Prime Soils)
- Wildlife Corridors (Rappahannock River Valley National Wildlife Refuge)
- Water Quality (Wetlands and Riparian Corridors)

# Virginia Navy Partnership Example – Northern Neck EPA



# Northern Neck Navy EPA Partnership

Two Installations – Naval Support Facility Dahlgren and  
Naval Air Station Patuxent River





# Northern Neck Navy EPA Partnership

## Partners on the Northern Neck EPA:

### **Military**

### **Installations**

NSF Dahlgren

NAS Patuxent

River

### **Conservation Groups**

Trust for Public Land

Northern Neck Land Conservancy

The Conservation Fund

### **State Agencies**

VOF

VA DWR

VA DCR

# Northern Neck Navy EPA Partnership

## By the Numbers:

Transactions	Acres	Expenditures
12	4,554	\$ 32,434,000

## Conservation Values:

- Farmland Conservation (Prime Soils)
- Historic Site Viewshed and Buffer (George Washington Birthplace NM, Stratford Hall, Westmoreland State Park)
- Water Quality (Wetlands and Riparian Corridors)

# Readiness and Environmental Protection Integration (REPI) Program in Virginia

## Questions?

For more Information after this session, please visit the  
Department of Defense Website:

<https://www.repi.mil/>



# Readiness and Environmental Protection Integration (REPI) Program in Virginia

Lynda Frost, Senior Project Manager, Trust for Public Land  
[lynda.frost@tpl.org](mailto:lynda.frost@tpl.org) (202) 297-9370

Lindsay Vargenko, Environmental Scientist, Naval Air Station Patuxent River  
[lindsay.a.Vargenko.ctr@us.navy.mil](mailto:lindsay.a.Vargenko.ctr@us.navy.mil) (573) 239-3006

Heather Richards, Mid-Atlantic Regional Director, The Conservation Fund  
[hrichards@conservationfund.org](mailto:hrichards@conservationfund.org) (703) 203-0060

Joanna Ogburn, Principal, JBO Conservation  
[joanna@jboconservation.com](mailto:joanna@jboconservation.com) (410) 829-5487